

- Bachelors of Science in Computer Science applicants must have a minimum grade of C plain in Mathematics at KCSE or a principal in A-levels or its equivalent.
  - Bachelors of Education applicants must have a minimum grade of C+ (Plus) in KCSE/Principal passes in A levels/ its equivalent in the specific subject areas.
  - Bachelor of Education applicants with Diploma in a relevant area of study.
  - Bachelor of Science in Nursing (BScN)
    - C+ in Mathematics/Physics
    - C+ in Chemistry
    - C+ in Biology
    - C+ in English/Kiswahili
  - Bachelor of Science in Nursing (BScN)-Upgrading applicants must be Kenya Registered Community Health Nurse (KRCHN) or a Kenya Registered Nurse/ Midwife (KRN/W) from a recognized institution.
- Applicants must also have
- KCSE minimum grade or C plain or
  - KCE/EACE Division II plus or A-level principal and subsidiary pass in science subjects.
  - KCE/EACE Division III plus a certificate in Nursing.
- Bachelor of Science in Community Health and Development (BSc-CHD) applicants must have a minimum grade of C plain in KCSE in the following subjects:
    - Mathematics/Physics
    - Chemistry/Biology
    - English/Kiswahili
 Or Kenya Advanced certificate of Education (KCE) with 2 principal passes (Biology and Mathematics) and one subsidiary pass.
  - Bachelor of Science in Health Professionals Education must have a Diploma in any health or medical related program
  - Bachelor of Science applicants in Biology, Chemistry and Physics must have a minimum grade of C plain or a principal pass in A-levels or its equivalent in Mathematics .

## INTAKES

January, May and August for Regular, Evening & Weekend Classes. The teaching methods include face-to-face lectures, e-learning, group discussions, practical demonstrations, brainstorming and role plays

## APPLICATION PROCEDURE

Application for admission is made on a form obtained from Admissions Office or downloaded from the University website ([www.cuea.edu](http://www.cuea.edu))

Submit a duly filled form and academic copies to any campus. Attach a banker's cheque or deposit slip of application fee.

For more information, kindly contact the admission office.

**Langata Main Campus**

**+254-709-691-111**

**Langata Main Campus**

**admissions@cuea.edu**

**Eldoret Gaba Campus**

**+254 728 458276 registrygaba@cuea.edu**

## Why CUEA?

- Chartered Private University accredited by Commission of University Education
- 34 solid years of offering an education grounded on values
- A Leading Regional and International University.
- Rich diversity: Over 20 nationalities and over 100 programs on offer
- Clear learning path from Certificate, Diploma, Degree, Masters and Doctoral Courses
- Training and examinations center for ACCA and KASNEB (CPA & CS)
- Two campuses: Main campus located in Langata Nairobi and Gaba campus located in Eldoret
- Rich extra curricula activities

 [TheCatholicUniversityOfEasternAfricaCuea](https://www.facebook.com/TheCatholicUniversityOfEasternAfricaCuea)

 [@cuea\\_official](https://twitter.com/cuea_official)  [www.cuea.edu](http://www.cuea.edu)

**#ExperienceCUEA**



# THE CATHOLIC UNIVERSITY OF EASTERN AFRICA (CUEA)

“Consecrate them in the truth”

Founded by :

Association of Member Episcopal Conferences in Eastern Africa (AMECEA)



# UNDERGRADUATE COURSES

*Education Grounded on Values*

## **FACULTY OF THEOLOGY**

- Bachelor of Theology
- Baccalaureate in Sacred Theology

## **FACULTY LAW**

- Bachelor of Law(LLB)

## **SCHOOL OF BUSINESS**

Bachelor of Commerce with the following options:

- Accounting
- Finance
- Marketing
- Human Resources Management
- Banking and Financial Services
- Management

## **FACULTY OF SCIENCE**

- Bachelor of Science in Biology
- Bachelor of Science in Chemistry
- Bachelor of Science in Physics
- Bachelor of Science in Mathematics
- Bachelor of Science in Computer Science
- Bachelor of Science in Actuarial Science
- Bachelor of Science in Library Information Science
- Bachelor of Science in Nursing (BScN)
- Bachelor of Science in Nursing (BScN)-Upgrading
- Bachelor of Science in Community Health and Development (BScCHD)
- Bachelor of Science in Health Professionals Education

## **FACULTY OF ARTS & SOCIAL SCIENCES**

- Bachelor of Arts in Kiswahili and Communication Studies
- Bachelor of Arts in Sociology
- Bachelor of Arts in Economics
- Bachelor of Arts in Political Science
- Bachelor of Arts in Social Work
- Bachelor of Arts in Geography
- Bachelor of Arts in History
- Bachelor of Arts in Philosophy
- Bachelor of Arts in Religious Studies
- Bachelor of Arts in Philosophy and one of the following:
  - Sociology, Political science, Economics, Anthropology
- Bachelor of Arts in Development Studies
- Bachelor of Arts in Counseling Psychology
- Bachelor of Arts in International Relations
- Bachelor of Arts in Anthropology
- Bachelor of Arts in Environmental Management and Planning

## **CENTRE FOR SOCIAL JUSTICE AND ETHICS**

- Bachelor of Justice and Peace
- Bachelor of Church Management and Leadership

## **FACULTY OF EDUCATION**

### **Bachelor of Education - Arts (Regular and Part-time)**

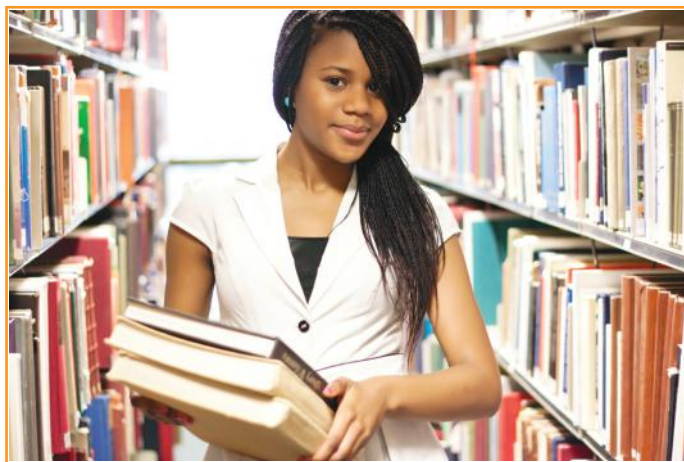
with the following combinations:

- Business Studies / Geography
- History / Christian Religious Education
- English / Literature in English
- History / Geography
- Kiswahili / History
- Kiswahili / Geography
- Kiswahili / Christian Religious Education
- English / Christian Religious Education (non-Kenyans)

### **Bachelor of Education - Science (Regular and Part-time)**

with the following Combinations:

- Mathematics / Geography
- Mathematics / Business Studies
- Geography / Physics
- Geography / Chemistry
- Physics / Chemistry
- Chemistry / Biology
- Mathematics / Physics
- Mathematics / Chemistry
- Physics / Biology
- Computer Studies / Mathematics



## **Entry Requirements**

Undergraduate/Bachelor's Degree Programs

- KCSE holders must have a minimum mean grade of C+ (plus).
- Advanced Certificate of Education GCE or A-levels applicants must have at least 2 principal passes and one subsidiary pass or its equivalent and must have passed in subjects related to the course applied for.
- Diploma or professional certificate in a relevant discipline from an institution recognized by the University Senate.
- Advanced Diploma in a relevant field, applicant must have an ordinary Diploma from a recognized institution.
- Pre-University certificate with a mean of C+ (plus) and above from a recognized institution, and must have scored a C in KCSE or its equivalent.

## **Non-Kenyans**

- Must have satisfied the minimum University entry requirement in their country and meet departmental requirements for the subjects applied for.
- Candidates from non-English speaking countries should demonstrate proficiency in written and spoken English or undertake certificate in English course

## **Departmental Requirements**

- Bachelors of Commerce applicants must have a minimum grade of C plain in both Mathematics and English or principle pass in A-level or its equivalent. Diploma/Advanced Diploma in Business related fields
- Applicants for Bachelors of Law should have a B plain English or Kiswahili in KCSE
- Advanced Certificate of Education with a minimum of 2 principal passes
- OR**
- Diploma or professional certificate in relevant discipline from an institution recognized by the Senate
- A bachelor's degree from a recognized university